

KINTETSU GROUP HOLDINGS

COMPANY PROFILE



KINTETSU
GROUP HOLDINGS

6-1-55 Uehommachi, Tennoji-ku, Osaka 543-8585, Japan
<https://www.kintetsu-g-hd.co.jp>

2021.03

KINTETSU
GROUP HOLDINGS

To quickly respond to changes in the business environment and achieve further growth, under the name “Kintetsu Group Holdings Co.,Ltd.” our group companies will go all-out to satisfy all of our customers, in transportation, real estate, merchandise sales, hotel and leisure and other various businesses relating to people’s everyday life. At the same time, all group companies will work in synergy to display the collective strength of the entire Kintetsu Group. We will continue our sincere efforts to support and enrich our customers’ daily life by providing them with new delights and prosperity, thereby contributing to society’s development.

Real Estate
Business



Merchandise Sales
Business
Kintetsu



Transportation
Business



Other
Businesses



Hotel and Leisure
Business





TRANSPORTATION

With our well-developed transportation network and capacity, we connect towns with towns and people with people.



Sightseeing Limited Express "Shimakaze"



Nara Kotsu Bus Lines



Beppu Ropeway



Kintetsu Rental & Leasing (ORIX Rent-A-Car)



Osaka-Nagoya Limited Express "HINOTORI"

Railway Business



Yamato-saidaiji Station (Central gate)



Yoro Railway

Kintetsu Group operates several railways, including Kintetsu Railway, which runs on a total track length of approximately 500 km. Covering six prefectures in the Kinki and Tokai regions, we offer interurban, sightseeing and regional transportation services for commuters, tourists and other passengers. We constantly strive to meet customers' various needs by improving our operation safety level, expanding barrier-free facilities, and utilizing advanced technologies such as AI and IT systems for station management, to provide safe and comfortable transportation services.

Bus and Taxi Business



Kintetsu Bus



Kintetsu Taxi

We manage bus and taxi companies in the Kinki, Tokai, Hokuriku, Chugoku, Shikoku, and Kyushu regions. Our bus companies run long-distance buses bound for various parts of Japan, sightseeing buses, and fixed-route buses for local residents. With dedicated taxi stands installed at stations, hotels and hospitals, our taxi companies offer services that satisfy customers' needs.

Distribution Business



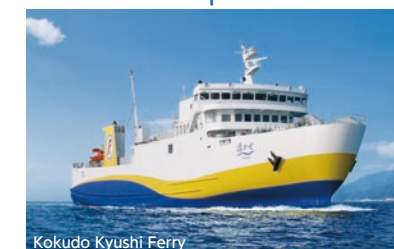
Kintetsu World Express



Fukuyama Transporting

We have established a comprehensive logistics and delivery system, comprising freight transport to Asia, Americas, and Europe, and trucking that extends from Hokkaido to Okinawa.

Marine Transportation Business



Kokudo Kyushi Ferry



Esperanza

In the field of marine transportation, we run Kokudo Kyushi Ferry, the shortest route linking Shikoku and Kyushu. In the Ise-Shima area, we operate leisure boats that navigate Toba Bay, the sailing leisure boat Esperanza cruising in Ago Bay, and liners linking Kashikojima and Wagu.



REAL ESTATE

We advance a new, vibrant lifestyle that brings you greater happiness and amenities.



"ABENO HARUKAS" viewed from "TEN-SHIBA"



Laurel Square Kento the Residence



Laurel Tower Renai Hamamatsucho



TEN-SHIBA i'na



Ayameike Residential Area

Real Estate Sales Business



Laurel Tower Nagoya Sakae



Kintetsu Gakken Nara Tomigaoka Residential Area

With knowledge been passed on for generations, along with novel ideas, we aim to build quality housing with safety guaranteed. We put our energies into quality as well as appearance; some of our condominiums have received Good Design Awards for their stylish designs. Furthermore, we offer new homes that are friendly to family members and the environment by, for example, adopting advanced facilities for energy creation and saving.

Real Estate Leasing Business

We manage the terminal buildings of Osaka-Abenobashi, Kintetsu-Nagoya, Kintetsu-Nara and Kintetsu-Yokkaichi Stations as well as industrial buildings in front of stations along Kintetsu Railway lines, striving to develop prosperous towns with the railway station as the focal point. We have expanded our office business, before run mainly in the Kansai region, to the metropolitan Tokyo and Tokai regions. Further, we operate rental apartments for families and singles, each tailored to residents' respective needs.



Reolax Tomigaoka



Uehommachi YUFURA

Renovation Business

With the theme "Healthy, comfortable, safe and eco-friendly," we propose renovation plans for housing mainly in areas along Kintetsu Railway lines. Based on our accumulated experience and track record, we realize comfortable spaces, using an abundance of natural materials and incorporating universal and eco-friendly designs.



Megasolar Business



We have undertaken the megasolar business to help promote widespread use of renewable energies and the revitalization of local communities.

Agricultural Business



On our unused land, we have built plastic greenhouses as well as plant factories illuminated only by artificial lighting, delivering safe and reliable vegetables to customers.



MERCHANDISE SALES

With a wide variety of services that fulfill customer demands, we offer new value and satisfaction.



MERCHANDISE SALES



TRANSPORTATION

REAL ESTATE

MERCHANDISE SALES

HOTEL AND LEISURE

CULTURAL PROGRAMS

Department Store Business



Under the theme "Continuing to provide customers with new value," Kintetsu Group operates Kintetsu Department Store Main Store Abeno Harukas near Osaka-Abenobashi Station and other department stores near Osaka-Uehommachi, Yamato-Saidaiji and Yamato-Yagi Stations and other major stations. We strive to establish new commercial facilities where attractive goods, events and people await so everyone can spend an enjoyable day.

Retail Business



We operate supermarkets, providing attractive products and services that give customers great satisfaction. Placing top priority on supplying fresh and safe foods, we support your daily life. Through a variety of community-based retail activities, We help revitalize towns and people alike.



Stores-within-station-premises Business

We operate many types of shops, including convenience stores, cafes, drug stores, variety stores and high-end supermarkets, primarily in terminal stations, to customers satisfaction.



Service Area Business



We operate restaurants and shops in service areas and parking areas on expressways in the Kinki, Chubu and Hokuriku regions, providing a comfortable space with an attractive menu and products.



HOTEL and LEISURE

We always extend our highest hospitality to ensure all guests can soothe their hearts.



Venue of the G7 Ise-Shima Summit 2016: Shima Kanko Hotel



Miyako Hotel Hakata



Miyako City Osaka Hommachi



The Westin Miyako Kyoto

Hotel and Ryokan Business

We operate the hotel chain Miyako Hotels & Resorts in Japan and overseas. Attractive services are provided at a total of 23 facilities ranging from urban city hotels to first-class resort hotels, all of which enhance the brand power of "Miyako Hotels & Resorts." We also run elegant ryokan (Japanese-style inns) that offer guests the highest hospitality, allowing them to enjoy the seasonal beauty of Japan.

Reorganization of Miyako Hotels & Resorts brand

Commencing on April 1, 2019, we have categorized Miyako Hotels & Resorts hotels into three groups—Miyako Hotel, Miyako City, and Miyako Resort—thereby quickly and easily highlighting for our customers the different service styles of hotels in each category, and creating a foundation for newly establishing and renewing hotels in the future.



Contemporary luxury, timeless traditions

Miyako Hotel, host to an array of distinguished guests throughout the years, is a full-service hotel with a refined modern style.



The smart choice for city breaks

Urban hotels providing a casual way to enjoy the Miyako experience.



Taking relaxation to a new level

Full-service resort style hotels, offering an enchanting way to refresh mind and body.

Kinki region

- The Westin Miyako Kyoto
- Miyako Hotel Kyoto Hachijo
- Miyako City Kintetsu Kyoto Station
- Sheraton Miyako Hotel Osaka
- Osaka Marriott Miyako Hotel
- Miyako City Osaka Tennoji
- Hotel Kintetsu Universal City
- Miyako Hotel Amagasaki
- Kobe Kitano Hotel
- Kashihara Kankou Hotel
- (Traditional Japanese-style inn) Mikasa Ryokan
- (Traditional Japanese-style inn) Nara Tsukihi-Tei
- Miyako City Osaka Hommachi

Chugoku

- Hagi Kanko Hotel

Kanto Koshinetsu

- Sheraton Miyako Hotel Tokyo
- Miyako City Tokyo Takanawa
- Okunikko Kogen Hotel
- Hakone Kogen Hotel

Tokai

- Miyako Hotel Gifu Nagaragawa
- Miyako Hotel Yokkaichi
- Shima Kanko Hotel
- The Classic / The Bay Suites
- Miyako Resort Shima Bayside Terrace
- Miyako Resort Okushima Aqua Forest
- Hotel Shima Spain Mura
- (Traditional Japanese-style inn) Kashikojima Hojoen
- Shorenji Lake Hotel

Kyushu

- Miyako Hotel Hakata

Overseas

- Miyako Hotel Los Angeles
- Miyako Hybrid Hotel Torrance, California

•Miyako Hotels & Resorts member facilities



Miyako Hybrid Hotel Torrance, California



Mikasa Ryokan (Nara)



HOTEL and LEISURE

We help customers have an exhilarating time, bringing them lots of smiles and leaving them with fond memories.

Shima Spain Village



Osaka Aquarium KAIYUKAN



Interactive Aquazoo, NIFREL

HOTEL and LEISURE



Tourism Business

We organize tours emphasizing tourists' safety and peace of mind, on the theme "providing memorable experiences and encounters for people around the globe." We propose truly enjoyable travel plans to make customers feel inspired and full of smiles spending a fantastic time.

We help customers of any age, young and old alike, to achieve self-actualization and build a circle of friends through travels. We are committed to offering attractive tourist services that can create repeat customers.

近畿日本'ツーリスト'



仲間が広がる、旅が深まる



クラブツーリズム



Leisure Business

We manage an integrated resort facility, whose centerpiece is Shima Spain Village/PARQUE ESPAÑA, a theme park full of Spanish charm with various attractions and shows. The resort facility also includes Hotel Shima Spain Mura and the Ise-Shima Natural Hot Spring "Himawari-no-yu." Among our other leisure facilities are the KAIYUKAN, one of the world's largest aquariums; NIFREL, an interactive "aquazoo"; Ikoma Sanjo Amusement Park, with a history of more than 80 years, located at the top of Mt. Ikoma; and Abeno Apollo Cinema, a movie theater. These locations serve as popular spots along Kintetsu Railway lines.



Abeno Apollo Cinema



Ikoma Sanjo Amusement Park



Kintetsu Kashikojima Country Club



CULTURAL PROGRAMS

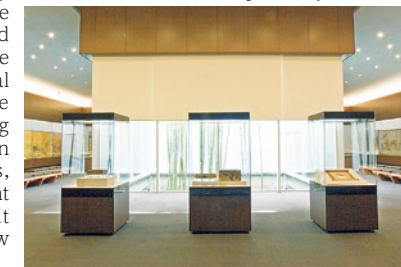
Passing on long heritages to the next generation



The Museum Yamato Bunkakan

The Museum Yamato Bunkakan

The Museum Yamato Bunkakan was founded based on the ambitions of Oita Torao, the 5th president of Kintetsu Corporation (commonly called Kintetsu). His desire was to undertake a business that would last long and be handed down to posterity, fulfilling a cultural role as a company serving the Yamato region, which might be deemed the cradle of Japanese culture and art. The museum stores artworks such as Oriental paintings, calligraphy, sculptures, Japanese lacquer-work, metalwork, textile dyeing work, and glasswork. The collection numbers approximately 2,000 pieces, including national treasures and important cultural properties. Many visitors find it exciting and pleasurable to encounter new aspects of Oriental art.



Shouhaku Art Museum

The Shouhaku Art Museum, which is located in a quiet residential area around Gakuemae Station in Nara City, was founded in March 1994. The establishment was supported by the donation of works by distinguished painters, Uemura Shoko and Uemura Atsushi, and also helped by funding from Kintetsu.

The museum collects, stores, and displays various artworks created by the three generations of the Uemura family (Uemura Shoen, Shoko, and Atsushi) such as paintings, rough drafts, sketches to introduce their Japanese-style paintings.



ABENO HARUKAS Art Museum

The ABENO HARUKAS Art Museum was established inside the ABENO HARUKAS building as an urban museum that enables everyone to casually enjoy art and culture. This full-scale facility is capable of exhibiting national treasures and important cultural properties. It is conveniently located in immediate proximity to and in a complex building housing a department store, offices and hotels. Capitalizing on this advantage, the museum holds exhibitions of artworks in various categories, ranging from Japanese art, Western art to contemporary art.



Kintetsu Liners (Kintetsu Rugby Football Team)



The Kintetsu rugby team known as the Liners aims to bring excitement to many fans as a developer of sports culture and sports business. Conscious of and responsible in this endeavor, the Liners always strive to be the best fighting team possible.

